



GALERIE DOMINION

## THE GALLERY

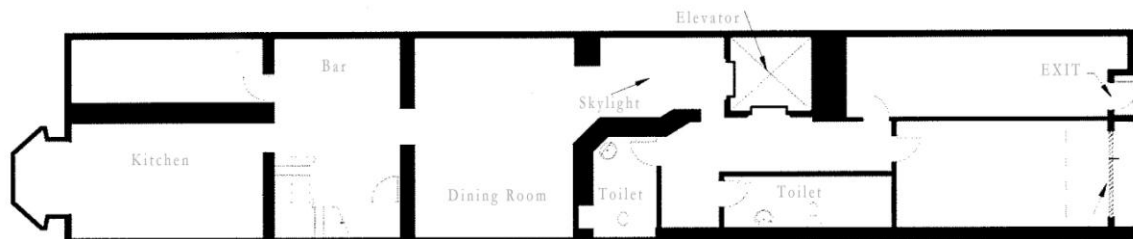


Dominion Gallery is ideal for charitable fundraisers up to 200 people or private events as intimate as 15 people. We welcome you to discover this exquisite space located at 1438 Sherbrooke Street West and rediscover Landau Contemporary.

## THE BUILDING

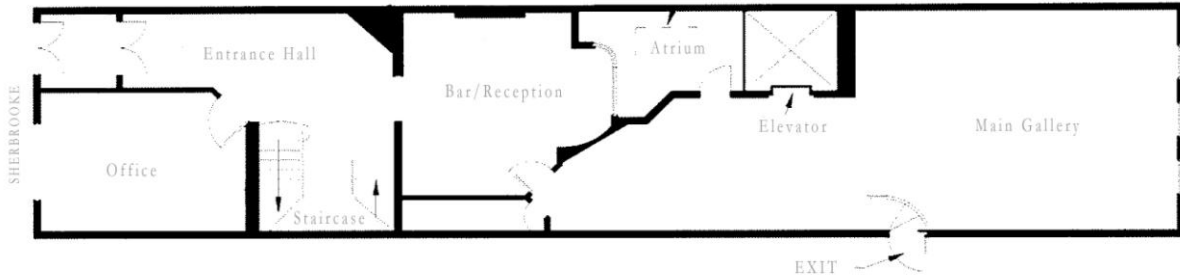
### Lower Ground Floor

A panelled staircase leads down to the kitchen, bar and lounge area with a dining/board room. Perfect for smaller events, the dining table, which seats 10 people, is surrounded by massive brick arches, stone walls and marble floors with wood-beamed ceilings and recessed lighting. Catering services available.



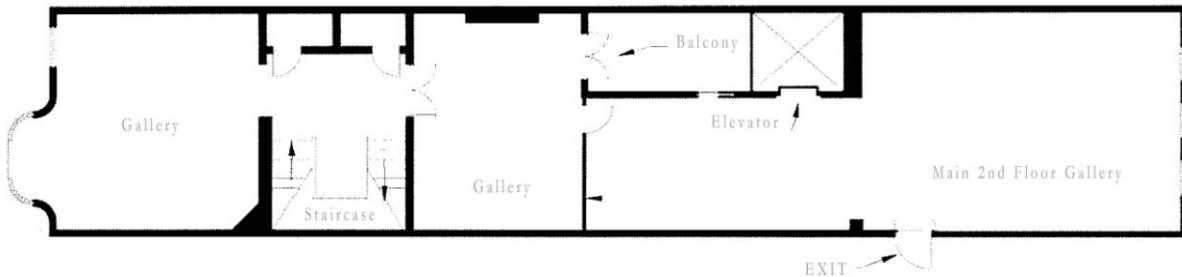
## Ground Floor

Elegant double glass entry doors lead to a grand entrance foyer with a fireplace and monumental wood panelled staircase. The formal wood panelled gallery, perfect as a reception or bar area, is highlighted by another fireplace and a bay window that looks onto the bright atrium and leads into the main gallery with 600 sq. ft. of open gallery space, ideal for standing cocktails or a more intimate sit-down dinner.



## Second Floor

This *piano nobile* level, accessed either by the elevator or the formal stair, is bathed in light and features twelve foot ceilings throughout. The front and formal gallery, with a balcony overlooking the atrium, features more open gallery space for guests to mingle and discover artworks from the internationally renowned Landau collection.



## Terrace

The elevator ensures a grand entrance to the large 700 sq. ft. south-facing terrace that is floored in cedar and totally enclosed with 8 ft. high wooden fencing for ultimate privacy. A built-in sun porch is perfect for summer tapas and cocktails.



## THE LEGACY



*Dr. Max Stern shows a painting by Jean-Paul Riopelle, c. 1965 (left). Max and Iris Stern show a drawing by Foujita, c. 1954 (right).*

Dr. Max Stern joined the Dominion Gallery of Fine Arts as manager in 1942 when the gallery was located on St. Catherine Street. He acquired the gallery with his wife as partner in 1947 and renamed it the Dominion Gallery shortly thereafter. In 1950, with an extensive collection of leading international and Canadian art, Dr. Stern moved the gallery to its Sherbrooke Street location where the majestic greystone offered 14 exhibition rooms on three floors.

Dr. Stern ran the gallery for some 50 years promoting Canadian artists and introducing Canadian collectors and institutions to important international artists like Fernand Leger, Henry Moore, Lynn Chadwick, many of the artists that are carried by Landau Fine Art today.

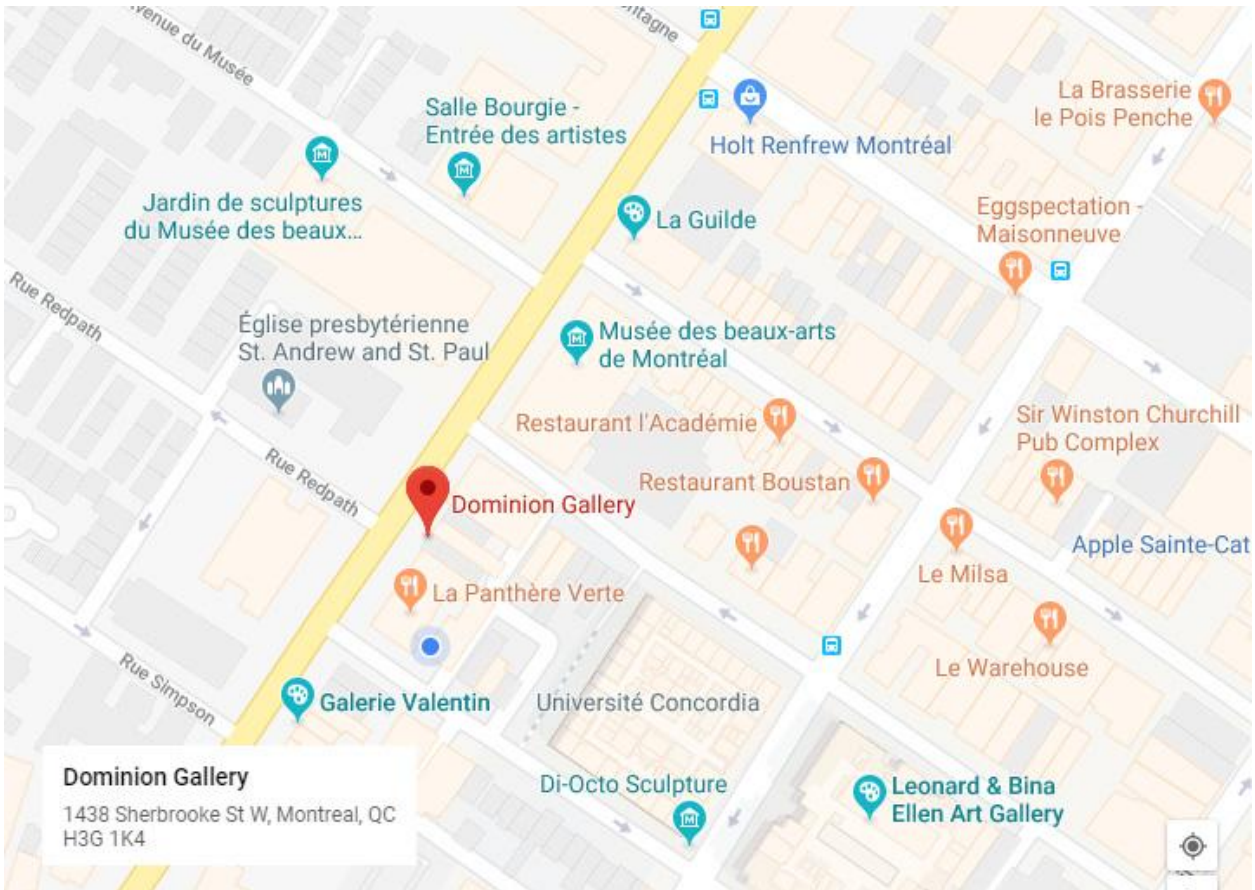
The Dominion Gallery continued to operate for more than a decade after Dr. Stern's passing in 1987 but closed its doors in December 2000. In 2001, the gallery was purchased by Canadian art dealer Robert Landau and reopened its doors in October 2005.

In keeping with Dr. Stern's mandate of promoting living artists alongside their more famous 20<sup>th</sup> century predecessors, today the Victorian landmark provides a stunning showcase for Landau Fine Art's modern masters as well as an exciting ensemble of leading international contemporary artists such as Kwang-Young Chun, Christoph Kiefhaber and Yves Zurstrassen from Landau Contemporary.



# LOCATION

At the centre of Montreal's *Golden Mile*, the Dominion Gallery, Canada's most prestigious private art establishment is only a few steps away from the Montreal Museum of Fine Arts, the city's best shops and restaurants, prestigious hotels and McGill and Concordia Universities.



# INQUIRIES

Galerie Dominion  
1438 Sherbrooke Street West  
Montreal QC H3G 1K4

T. 514 849 3311

W. [www.landaufineart.ca](http://www.landaufineart.ca)

Tim Dunn, Director

E. [timdunn@landaufineart.ca](mailto:timdunn@landaufineart.ca)